



## Flat 1, Howard One Howard Street, Nottingham, NG1 3LT

£540 Per week

- Available Academic year 2026/2027
- Including utilities and internet (subject to fair usage)
- Open Plan Kitchen / Lounge
- Intercom & Fob Entry System
- Walking Distance To NTU
- Only £180.00 per person per week (based on 3 sharing)
- Double rooms with Ensuites
- Integrated Appliances
- City Centre Location
- EPC B

# Howard One Howard Street, Nottingham NG1 3LT

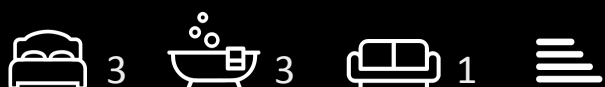
**\*\*CITY CENTRE APARTMENT AVAILABLE SEPTEMBER 2026/2027\* - Spacious 3 bedroom apartment at only £180.00 pppw inclusive of utilities and internet - ENSUITES! LOW DEPOSIT**

Located less than a 10 minute walk to NTU City Campus and with easy access to transport links to Clifton campus, Brackenhurst campus and Uni of Nottingham Jubilee campus this property is in the ideal location for all Nottingham students.

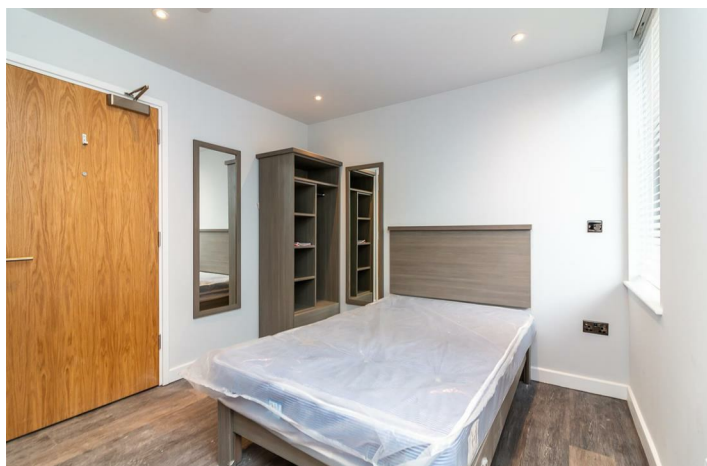
The building benefits from a lift, fob entry and CCTV.

At the heart of the apartment is an open plan kitchen living area with integrated appliances including fridge freezers, dishwasher and oven. The building has pay per use industrial laundry facilities for you to use.

Each of the double bedrooms is provided with a 4ft double bed, wardrobe, desk and chair. There is also an ensuite shower room to each bedroom benefiting from a modern fitted shower, WC, sink and mirror.



Council Tax Band: A



3 Spacious Bedrooms – each with its own private en-suite bathroom for comfort and convenience.

Fully Furnished – stylish furnishings and modern finishes throughout.

Open-Plan Living & Kitchen Area – ideal for relaxing or socialising.

High-Speed WiFi & All Utility Bills Included.





Directions

Viewings

Viewings by arrangement only. Call 01157042554 to make an appointment.

EPC Rating:

Energy Efficiency Rating		
	Current	Potential
Very energy efficient - lower running costs		
(92 plus) A		
(81-91) B		
(69-80) C		
(55-68) D		
(39-54) E		
(21-38) F		
(1-20) G		
Not energy efficient - higher running costs		
England & Wales		EU Directive 2002/91/EC